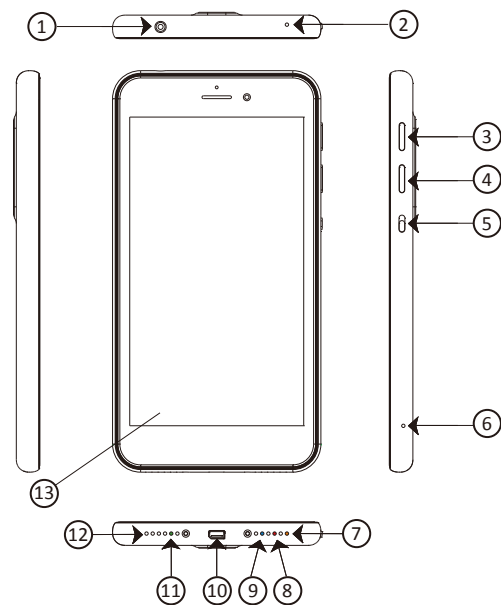


1. Names and Parts

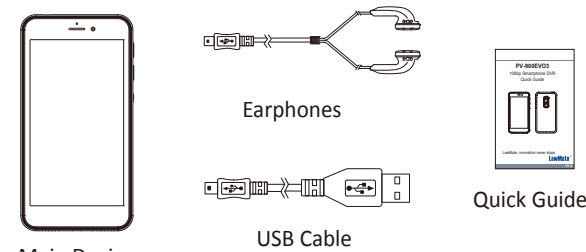


- | | |
|---------------------------------|------------------------|
| 1. Lens | 7. Wi-Fi - Orange LED |
| 2. Reset | 8. Recording - Red LED |
| 3. Power On/Off Wi-Fi On/Off | 9. Power - Blue LED |
| 4. Lock Button | 10. USB Port |
| 5. Fast-record Switch | 11. Charge - Green LED |
| 6. Default | 12. Microphone |
| | 13. LCD Screen |

※ No microphones are available for USA market.

1

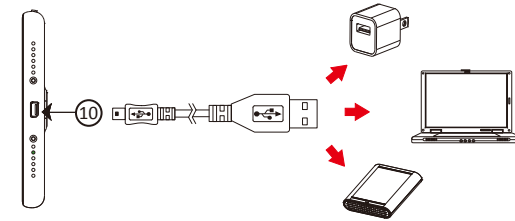
2. Package Content



Main Device

※ Do not remove serial number sticker!
Warranty is invalid if the sticker is tampered.

3. Charge Battery



Connect the micro USB 2.0 end of the cable to the USB port ⑩ and connect the other end to an USB power source, or plug it to a power bank of your own choice. The power bank then works as an extra battery. When charging is complete, the green LED will go off.

- Solid green LED ■ - the device is charging.
- Green LED goes off - the device is fully charged.

※ Always connect to an AC adapter for motion detection recording so that the memory can last out the memory.

2

4. Indicator Lights

| | | |
|---------------------|------------------|--|
| Solid Blue LED | Power On | |
| Solid Red LED | Recording On | |
| Blinking Orange LED | Wi-Fi connecting | |
| Solid Orange LED | Wi-Fi connect | |
| Solid Green LED | Charging | |

※ LED indicator can be turned off by pressing the light bulb icon on Main Menu.



5. Operation

5.1 Power on

Press ③ for 3 seconds. Device vibrates once and blue LED is on.

5.2 Normal Recording

- 5.2.1 Go to Main Menu ->> Record Mode icon ->> Normal ->> REC.
Device vibrates once and red LED is on.
- 5.2.2 In preview screen, user can press the tool icon for overwrite setting.



5.3 Motion Detection Recording

- 5.3.1 Go to Main Menu ->> Record Mode icon ->> Motion Detection ->> REC.
Once the device detect a movement, the recording will start. Device vibrates once and red LED is on.
- 5.3.2 In preview screen, user can press the tool icon for overwrite and detection sensitivity settings.



3

- ※ Video length under motion detection recording mode is always 1 minute.
- ※ To avoid vibration whenever motion recording is triggered, it is recommended to turn off vibration alert.
- ※ Place the device on a level surface to exit motion recording, as it could easily to trigger another false recording and make it very difficult to exit motion recording.

5.4 Instant Recording

Slide ⑤ upwards, the device will start recording automatically. Device vibrates once and the red LED is on.

5.5 Lock

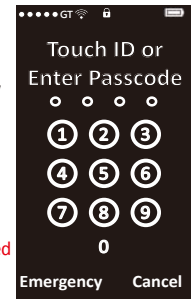
There are two ways to lock the screen.

5.5.1 Key Lock

Short press ④, the device will show a disguised scene of keyboard, as shown in picture.

To leave the disguised scene, long press ④ for 3 seconds.

※ To avoid image showing up on screen whenever it is tapped, it is recommended to always enable key lock.



5.5.2 Screen Lock

Long press ④ for 3 seconds, a small lock icon will appear and the screen is locked. To unlock the screen, long press ④ again for 3 seconds.



5.6 Wi-Fi

Short press ③ to turn on the Wi-Fi function, the orange LED will start to blink and the device is ready to be connected. When the cellphone successfully connects to the device, the orange LED will be solid.

4

5.7 Reset

When the device functions abnormally, press ②.

5.8 Default

5.8.1 Restore password and SSID
To restore Wi-Fi password and SSID, press ⑥ for at least 4 seconds and then release. The red and orange LED will turn on and then off.

5.8.2 Restore factory settings
To restore to factory settings, press ⑥ for at least 10 seconds and then release. The red and orange LED will turn on and then off.

5.9 Power off

With no ongoing recording, press ③ for 3 seconds.

6. Format Memory

Main Menu ->> Format icon.
Confirm formatting action by pressing OK.



7. Date and Time

7.1 Date and Time Setting

Main Menu ->> Time & Date Setting icon.



7.2 Date and Time Format

Main Menu ->> Date Format icon.



5

8. Passcode Setting

8.1 Enable Passcode

Main Menu ->> Passcode Login icon.



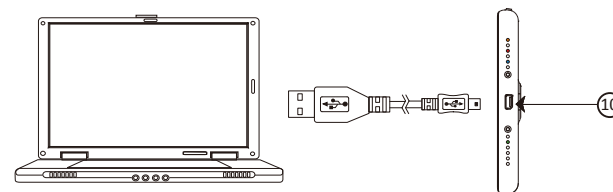
8.2 Set up Passcode

Main Menu ->> Set up Passcode icon.
Enter 8 digits for passcode, then press OK to finish setting.



9. Retrieve Videos and Photos from DVR

With the DVR powered off, plug the USB Cable into the USB port ⑩ on DVR and the other end to the computer. The device will work as a flash drive, then you can start to download videos and photos.



※ Note: When device capacity is used up, not all of the video files can be seen on the device due to limited playback cache size. Users must connect device with PC to view all of the files.

※ It is recommended to playback the motion recording videos on a computer. Playing back videos on the device with memory nearly full can be very sluggish.

6

10. Specification

| Display | |
|------------------------|--|
| LCD | 5" 854 x 480 TFT-LCD |
| Built-in Camera Module | |
| Built-in Image Sensor | 1/3" progressive CMOS sensor |
| Sensor Resolution | 2304x1536 |
| Sensor Sensitivity | 3.3 Lux @ F 2.0 |
| Lens F/No. | F 3.2 |
| Focal Length | 4mm |
| Angle of View | 66° |
| Video Spec. | |
| Algorithm | H.264, JPEG |
| File Format | MOV, JPG |
| Video Recording Mode | Auto/Manual/Motion Detection |
| Recording Capability | 1920x1080, 1280x720, 640x480 |
| Frame Rate | Up to 60 fps |
| Photo Capability | 5M(2592*1944) |
| Storage & I/O | |
| Memory Type | Built-in memory 64G Module |
| Data Interface | Mini USB 2.0 |
| Misc. | |
| Disguised Mode | Stand-By, LCD-Off |
| Date/Time Table | YYYY/MM/DD, HH:MM:SS |
| Power | |
| Power Input | DC5V |
| Power Consumption | 710mA(Wi-Fi off)-850mA(Wi-Fi on) LCD ON |
| Battery Input | DC 3.7V / 2000 mA Lithium battery |
| Charging Time | 240min(700mA) |
| Battery Lifetime | Continue recording 180min (Wi-Fi off)-150min(Wi-Fi on) |
| Physical | |
| Vibration Alert | Power on/off, Recording, Photo, Low battery |
| Dimension | 143x75x8.4mm |
| Weight | 135g |

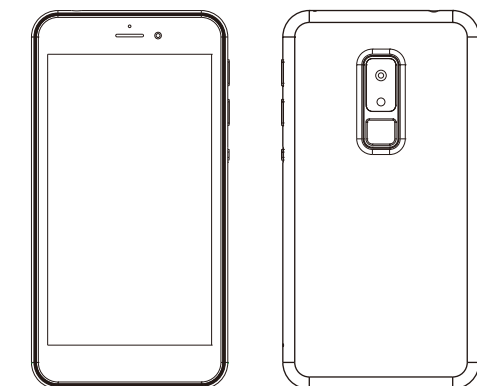
* This product is for Law Enforcement and Home Security Use Only!

7

PV-900EVO3

1080p Smartphone DVR

Quick Guide



LawMate, innovation never stops

LawMate

V1.2