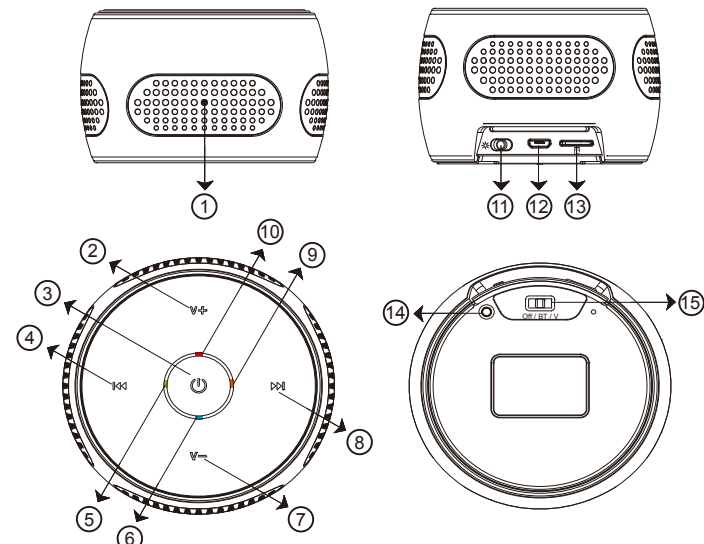


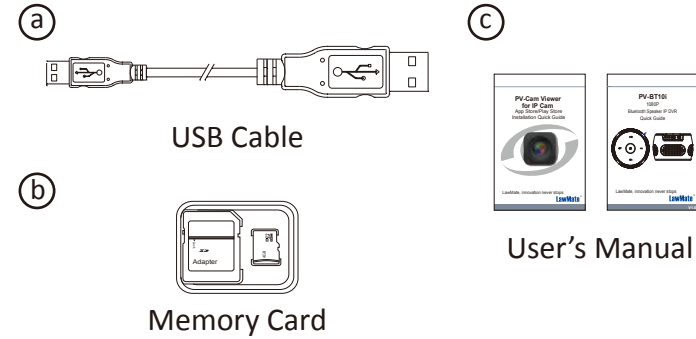
1. Names and Parts



1. Lens
2. Volume Up Button
3. Speaker Power On / Off Button Green LED (Charging)
4. Previous Track Button
5. Light Green LED (IP)
6. Blue LED (DVR Power On)
7. Volume Down Button
8. Next Track Button
9. Orange LED (P2P)
10. Red LED (Recording)
11. DVR LED Switch
12. Charging Port
13. Memory Card Slot
14. Default Key
15. Power Off / Bluetooth On / DVR On Switch

1

2. Package Content



*Warranty will be void if the serial number sticker is tampered.

3. Operation

3.1 Bluetooth Speaker

- 3.1.1 Switch (15) to "BT" and long press (3) to turn on the power.
- 3.1.2 When the device is turned on, the blinking blue LED shows that the speaker is ready to be paired with mobile device. Go to your mobile device and turn on the Bluetooth. You will find the name "PV-BT10i" on your mobile device and you can pair your mobile device to the speaker.

2

- 3.1.3 Once the device is connected to the speaker, the Bluetooth status indicator on the speaker changes from blinking blue to solid blue LED.

3.1.4 Understanding the control button:

- ⏸ : Short press to pause the music and short press again to resume music. Long press to turn off the speaker.
- ⏮ : Go to previous track.
- ⏭ : Go to next track.
- 🔊 : Volume up. Press and hold to increase the volume.
- 🔊 : Volume down. Press and hold to decrease the volume.

3.2 DVR function

- 3.2.1 Switch (15) to the right "V" (means video) and long press (3) . After 40 seconds of system initialization, the DVR will be on.
- 3.2.2 When the DVR is turned on, the blinking orange LED shows that the DVR is ready for IP connection. For more Wi-Fi / IP connection instruction, please refer to PV Cam Viewer Quick Guide for more details.

3

- 3.2.3 To disable the DVR LED indicator, please switch (11) to "OFF".

❗ If the speaker is not connected to any device, it will power off after 3 minutes of idle.

4. LED Indicator

- Blinking blue LED ■ - Bluetooth speaker is ready to be paired with mobile device.
- Solid blue LED ■ - Power on.
- Solid red LED ■ - Recording on.
- Blinking orange LED ■ - Searching for Wi-Fi connection.
- Solid orange LED ■ - Device connected to phone (P2P connected)
- Solid green LED ■ - Device connected to the router (IP connected)

5. Date and Time Setting

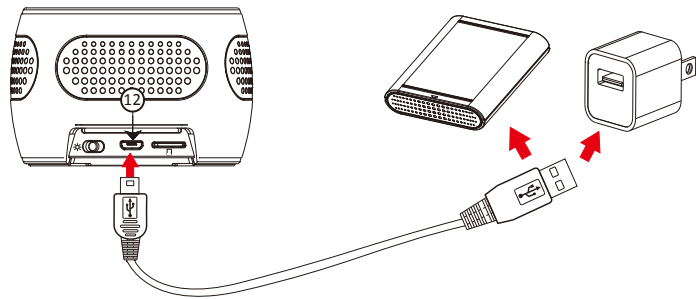
Go to the "Program Setting" on the PV Cam Viewer App to change the date and time setting.

6. Recording Mode

Go to "Recorder Setting" on the PV Cam Viewer App to change the recording mode to continuous recording or motion detection recording.

4

7. Charging the Battery



Connect the micro USB end of the cable to (12) and connect the other end to an USB power source (as shown above), or plug it to a power bank of your own choice. When device is charging, the green LED will stay on. When charged to its full capacity, the green LED will go off.

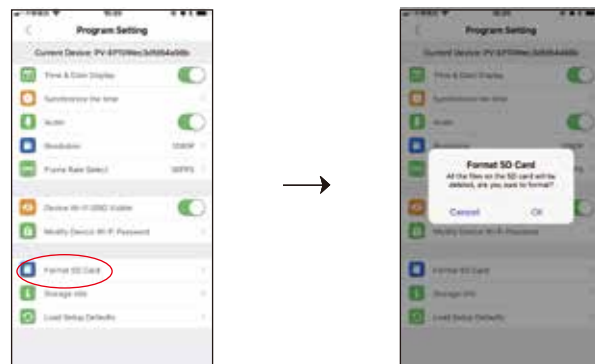
8. Format Memory Card

- 8.1 Go to program setting on the PV Cam Viewer App



5

- 8.2 Press Format Card and confirm command.



9. Download Videos to PC

This model does not support the function of retrieving files through USB port. The USB port is only for charging the device.

To retrieve the files, remove the memory card from the device. Insert it into a memory card reader and connect with a PC. The memory card will appear on your PC for you to view and download video files.

6

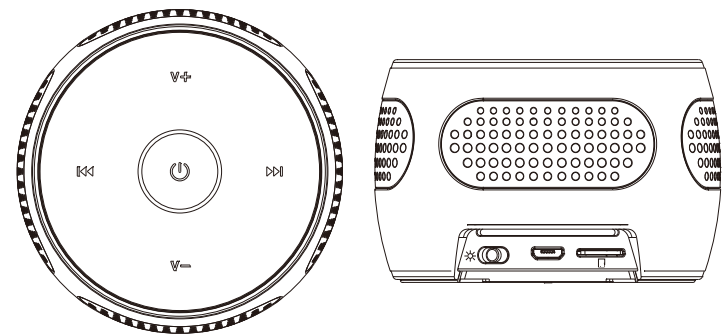
10. Specification

Built-in Camera Module	
Built-in Image Sensor	1/2.9" progressive CMOS sensor
Sensor Resolution	2000x1121
Sensor Sensitivity	0.1 Lux @ F 2.0
Lens F/No.	F 2.0
Focal Length	3.64
Angle of View	78°
Video Spec.	
Algorithm	H.264, JPEG
File Format	MOV, JPG
Video Recording Mode	Auto / Manual / Motion Detection
Recording Capability	1920x1080, 1280x720, 848x480
Frame Rate	Up to 30 fps
Photo Capability	2M (1600x1200)
Wi-Fi	
Wi-Fi	Built-in Wi-Fi Module
Storage & I/O	
Memory Type	Micro SD Card (Support SDHC max. 32GB)
Data Interface	Card Reader
Misc.	
Date/Time Table	YYYY/MM/DD, HH:MM:SS
Snapshot	Recording and playback video
Power	
Power Input	DC 5V
Power Consumption	480mA-530mA (Wi-Fi ON) · BT+ (20 - 380mA)
Battery Input	DC 3.7V / 1400mA polymers battery (XK504355)
Charging Time	180min (560mA)
Battery Lifetime	150min (1080P) BT OFF 165min (720P) BT OFF 180min (WVGA) BT OFF
Recording Time	500min @ 1920x1080 resolution (16GB SD card)
Physical	
Dimension	86x86x54 (mm)
Weight	345g

* This product is for Law Enforcement and Home Security Use Only!

7

PV-BT10i 1080p Bluetooth Speaker IP DVR Quick Guide



LawMate, innovation never stops

LawMate®

V1.4